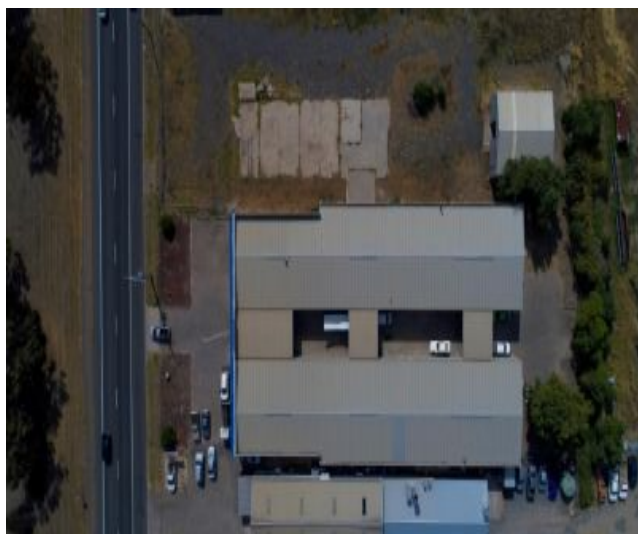


5382 1221

75 Pynsent St, Horsham
www.crbg.com.au

coller
rathgeber
property group



Horsham, VIC
125 Stawell Road

1
BED

1
BATH

0
CAR

Versatile commercial complex

This substantial building would ideally suit an owner occupier wanting to subsidise their rent by leasing surplus units or investors wanting a high profile property with the potential of high returns. Boasting a high profile location on the Western Highway arterial entrance to Horsham this impressive commercial premises comprises a tilt panel and portal steel framed building of (approx) 2000m² underroof designed to incorporate 6 separate units. Ranging in size from 273m² to 400m² (approx) each unit features individual services, access and amenities allowing for 6 independent occupancies at one time if required. One unit is currently leased until 1st July 2017. There is also an extensive display area frontage to Western Highway plus additional concrete yard at rear.

SOLD

Contact :



Tim Coller
0418 504 415
tim@crbg.com.au
<http://www.crbg.com.au>

Plans shown are only indicative of layout. Dimensions are approximate.

Horsham, VIC
125 Stawell Road