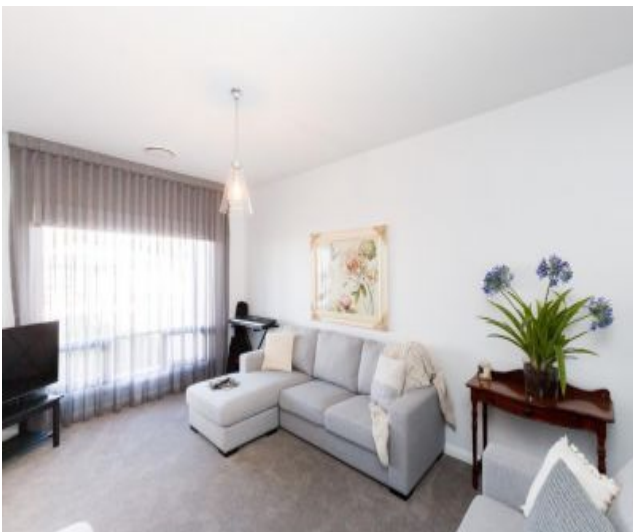


5382 1221

75 Pynsent St, Horsham
www.cprg.com.au

coller
rathgeber
property group



Horsham, VIC
14 Seater Close

3
BED

2
BATH

2
CAR

From the pages of Vogue magazine

Thoughtfully designed with total disregard for expense complete with attention to detail rarely seen in our market space this superb property is guaranteed to impress you from the moment you walk in the door. Complete with high quality finishes and appointments throughout this impressive home boasts a private formal lounge, spacious open plan living hub incorporating a generous family room complete with feature gas log fire, adjoining dining and stunning on trend kitchen complete with stone benchtops, chefs appliances and butler's pantry. Bedroom accommodation comprises a master suite incorporating extensive walk in robes and lavish ensuite and two further king sized bedrooms with BIRS. Designated study nook with built in desk, classy fully tiled family bathroom, well-appointed laundry, walk in linen room, oversize double garage with direct access and zoned climate controlled heating/ cooling. Set in a professionally landscaped yard with a generous alfresco and

open pergola, 30 x 20 colorbond shed incorporating a workshop/ storage and fully lined 'man cave' with mezzanine and toilet.

\$659,000

Contact :



Tim Coller
0418 504 415
tim@crpg.com.au

<http://www.crpg.com.au>

Plans shown are only indicative of layout. Dimensions are approximate.

Horsham, VIC
14 Seater Close