

5382 1221

75 Pynsent St, Horsham
www.crbg.com.au

coller
rathgeber
property group



Horsham, VIC
13 Shirley Street

3 BED
1 BATH
0 CAR

Entry level investment property

Currently leased until November 2020 for \$200.00 per week (gross) this well maintained property would make the ideal addition to any existing investment portfolio offering a great return on investment in excess of 8.0%. Functionally designed its spacious floorplan comprises three double bedrooms, separate lounge room complete with gas heating and split system cooling unit, galley style kitchen with adjoin meals area and family bathroom. Set on a low maintenance allotment requiring minimal upkeep with storage shedding.

\$123,000

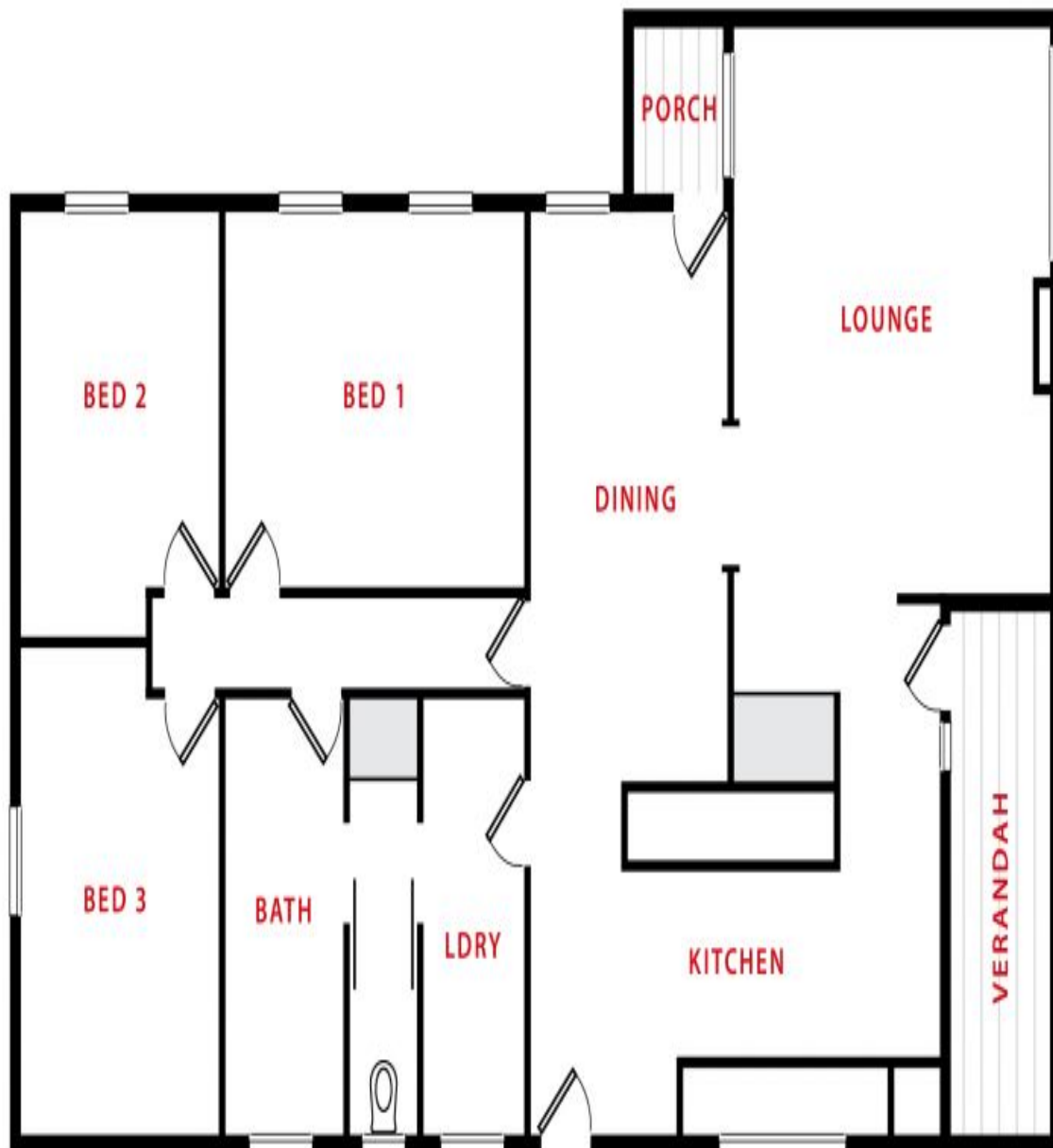
Contact :



Tim Coller
0418 504 415
tim@crbg.com.au
<https://www.crbg.com.au>

13 Shirley Street
Horsham

coller
rathgeber
property group



FLOOR PLANS/SITE PLANS ARE INTENDED AS A GENERAL GUIDE ONLY. NO REPRESENTATIONS OR WARRANTIES OF ANY NATURE WHATSOEVER ARE GIVEN OR INTENDED AND ANY PERSON USING THIS INFORMATION SHOULD ALWAYS RELY ON THEIR OWN ENQUIRIES.

Plans shown are only indicative of layout. Dimensions are approximate.

Horsham, VIC
13 Shirley Street