

5382 1221

75 Pynsent St, Horsham
www.cprg.com.au

coller
rathgeber
property group



Horsham, VIC
2/7 Magee Court

2
BED

2
BATH

2
CAR

Stunning Central Townhouse

Rarely does the opportunity arise to purchase a quality townhouse in a super central location with immediate access to the heart of the Horsham CBD and within easy walking distance of shopping centres, supermarkets, entertainment facilities and medical consulting rooms. This privately located townhouse has been functionally designed and meticulously maintained to offer the highest standards of accommodation and is ideally suited to professional couples, retirees or investors. Comprising 2 queen sized bedrooms and separate formal study complete with ensuite to the master and generous open plan living incorporating a spacious formal lounge room, adjoining dining room and kitchen appointed with extensive cabinets, WI pantry and quality appliances, fully tiled family bathroom and laundry, cosy gas heating and evaporative air conditioning. Appealing external improvements including a sunny North facing undercover entertaining area and fernery, double garage, garden shedding all set in

an established garden setting.

\$480,000

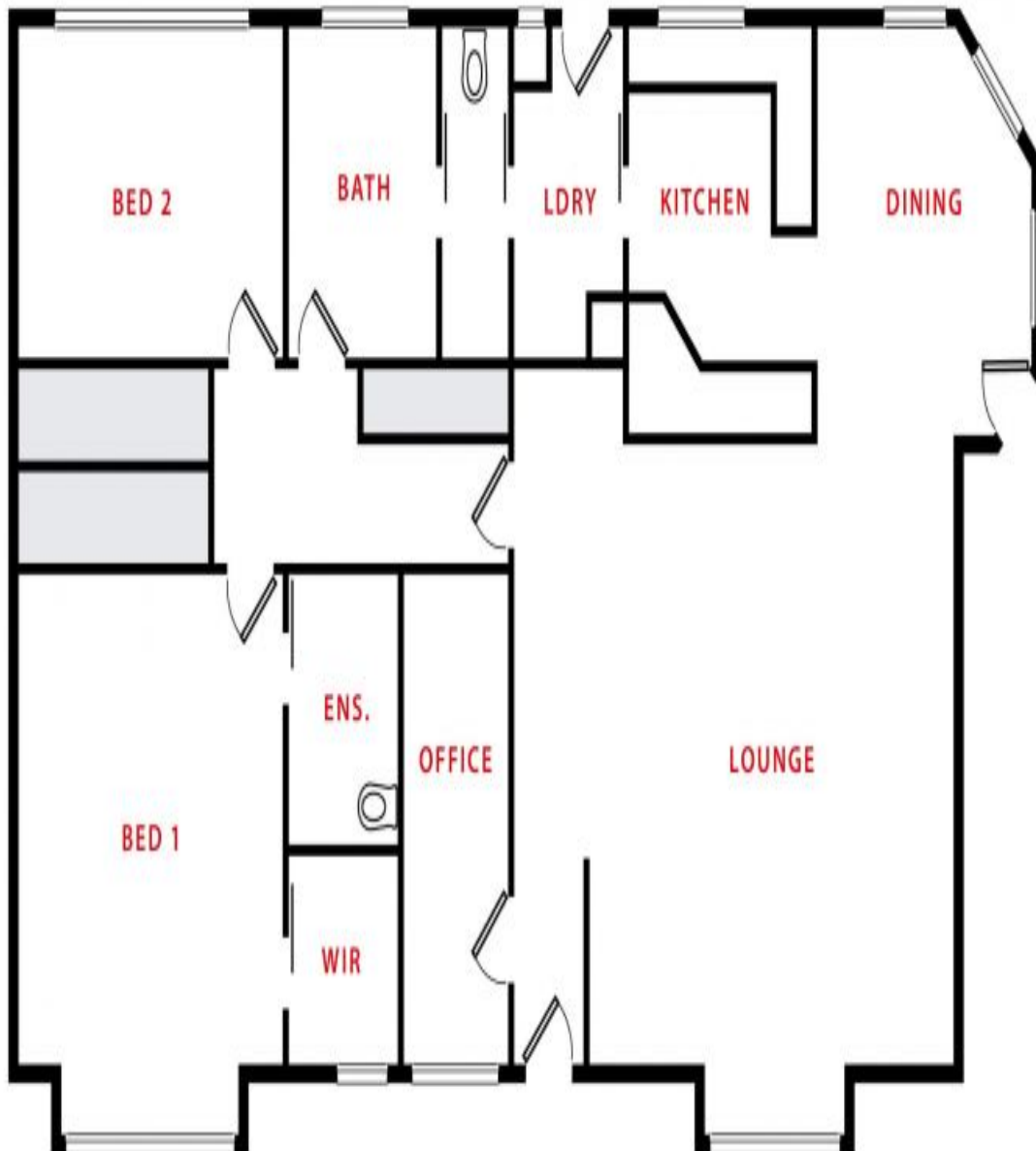
Contact :



Tim Coller
0418 504 415
tim@crpg.com.au
<https://www.crpg.com.au>

2/7 Magee Court
Horsham

coller
rathgeber
property group



FLOOR PLANS/SITE PLANS ARE INTENDED AS A GENERAL GUIDE ONLY. NO REPRESENTATIONS OR WARRANTIES OF ANY NATURE WHATSOEVER ARE GIVEN OR INTENDED AND ANY PERSON USING THIS INFORMATION SHOULD ALWAYS RELY ON THEIR OWN ENQUIRIES.

Plans shown are only indicative of layout. Dimensions are approximate.

Horsham, VIC
2/7 Magee Court