

5382 1221

75 Pynsent St, Horsham
www.cprg.com.au

coller
rathgeber
property group



Natimuk, VIC
27-29 Main Street

1
BED

1
BATH

1
CAR

The Chapel 1915

This is without a doubt one of the best renovated churches I have seen in 40 years. Features include a kitchen with excellent fittings and ample cupboard and storage space along with an upgraded bathroom with a large shower and double hand basin. Beautiful polished timber floors throughout, ceiling fans and two split systems. This property is a unique and rare opportunity to acquire an iconic residential property or potential lifestyle business. This beautiful, big, white church at Natimuk "1915" has been lovingly and meticulously created from the ground up. Recently re stumped it boasts open living, large courtyard, nature shaded tress, rose plantings, an orchard, veggie garden and chicken yards all set on a large double block. This property is just waiting for a new and inspiring custodian, "1915" has enormous scope and versatility for the new owner to create their own story.

\$450,000

Contact :



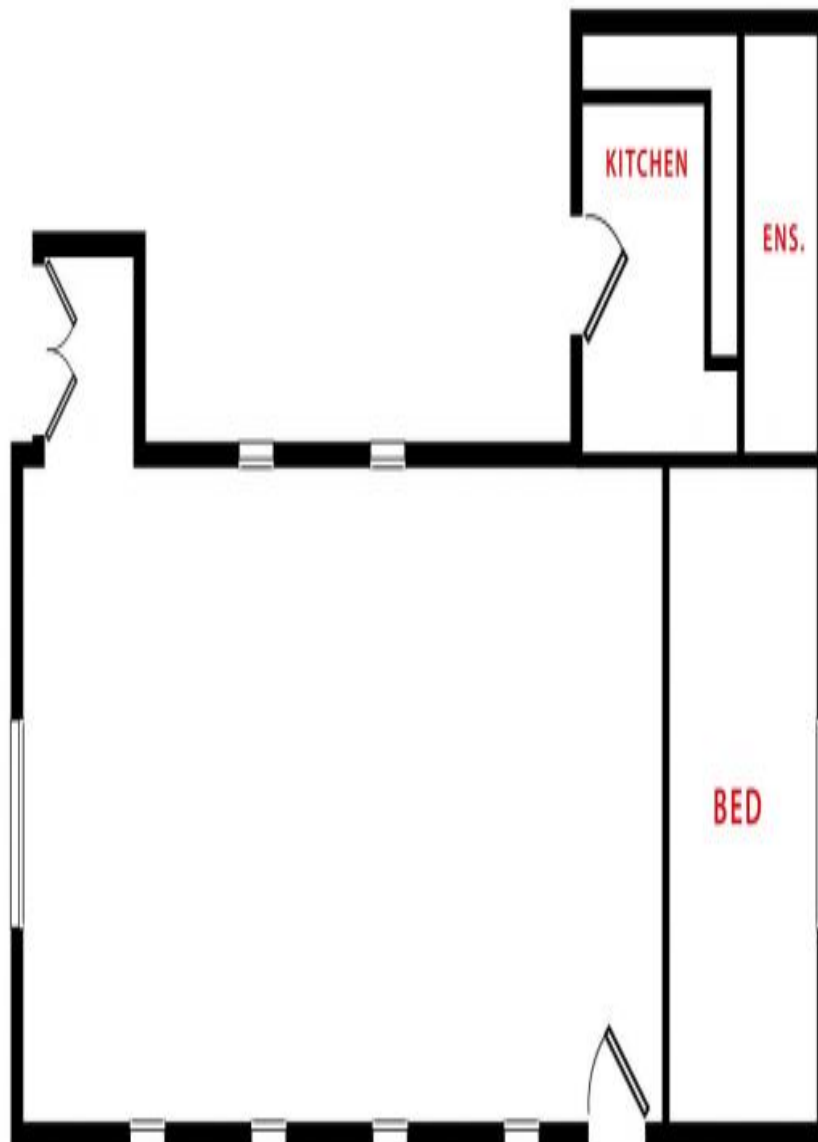
Garry Price
0417 541 652
mail@cprg.com.au

<https://www.cprg.com.au>

27-29 Main St

Natimuk

coller
rathgeber
property group



FLOOR PLANS/SITE PLANS ARE INTENDED AS A GENERAL GUIDE ONLY. NO REPRESENTATIONS OR WARRANTIES OF ANY NATURE WHATSOEVER ARE GIVEN OR INTENDED AND ANY PERSON USING THIS INFORMATION SHOULD ALWAYS RELY ON THEIR OWN ENQUIRIES.

Plans shown are only indicative of layout. Dimensions are approximate.

Natimuk, VIC
27-29 Main Street